



CREATURES OF THE WILD WOOD

www.creaturesofthewildwood.com



Easter Nature

Family activity pack

Explore

Create

Hunt

Puzzle

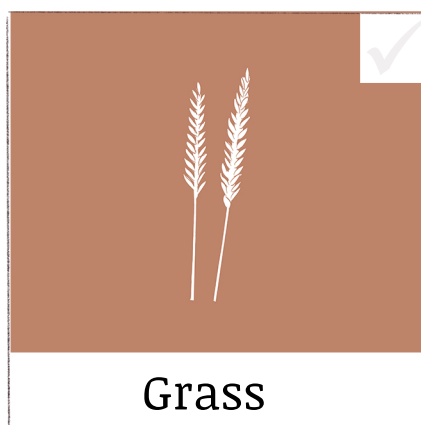
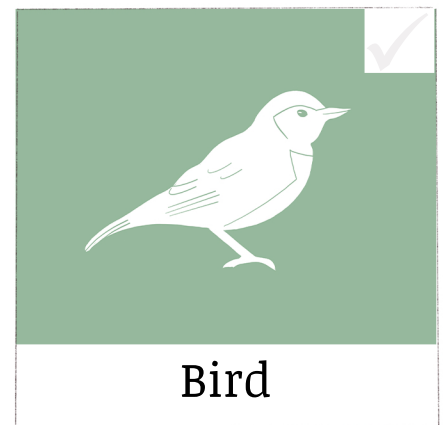
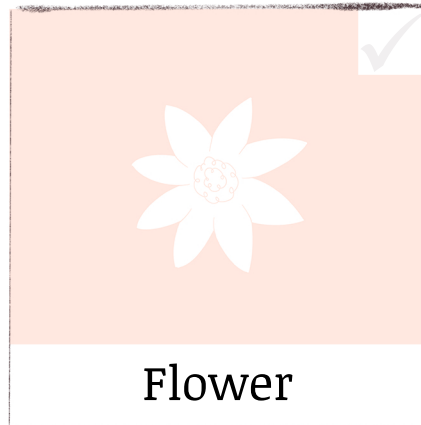
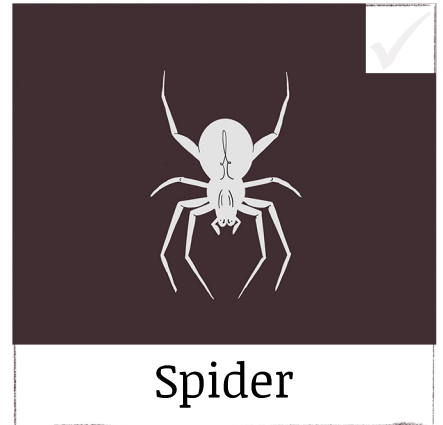
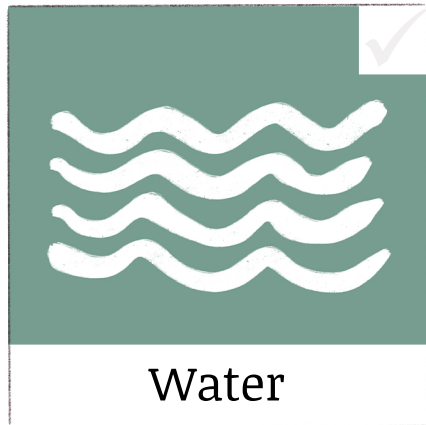
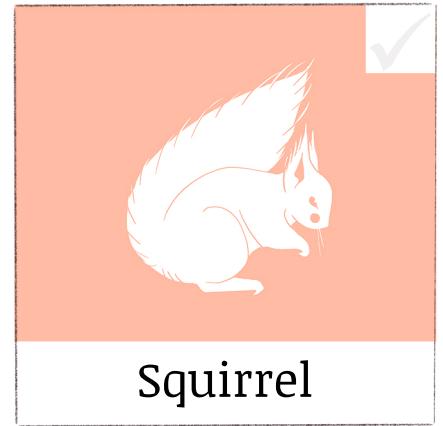
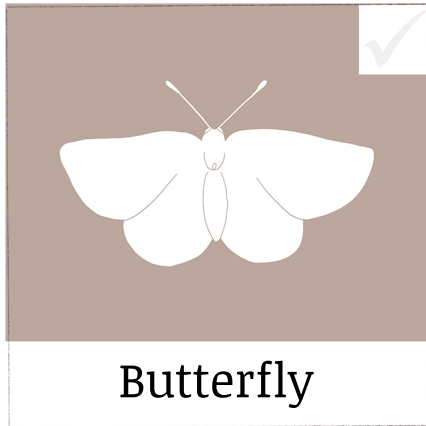
Discover

Track



NATURE SCAVENGER HUNT

Go on a walk or visit your garden and tick each item as you find it.
You can even colour each item as you see it in nature.



Trail Signs

Trail signs are creative ways of keeping kids entertained on a walk. They can track their journey and hopefully others will follow the signs.



MATERIALS

While on your walk gather supplies so that you can leave the signs of where you have been and where you are going.

- Sticks
- Stones
- Leaves
- Grasses
- Flowers



CREATING

Below are some of the signs you can leave on the ground using your gathered materials. Be creative and use whatever natural objects you find on your treck.

**This Way
Still On Track**



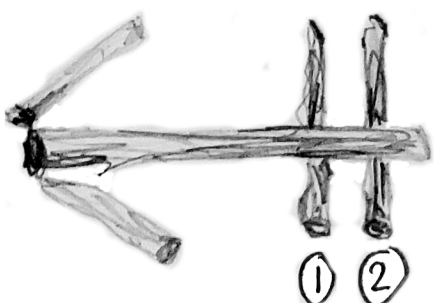
**Turn Here
Follow the arrow**



**Wrong Way!
Go a different way**



**Over Obstacles
(eg. Two Obstacles)**



**Gone Home
End of Trail**

Water This Way



HOW TO BUILD A BUG HOTEL

A bug hotel can end up being a home to many different types of animals – from hedgehogs and small mammals to frogs and creepy crawlies. It is the perfect way to use up garden waste and you can make your bug hotel as small or large as you want!

MATERIALS

Gather supplies, you can use so many different objects to make a bug hotel. Here's a list of some:

- Logs, twigs, sticks
- Wooden pallets
- Leaves, Moss
- Terracotta pots (can be broken)
- Bricks (preferably with holes in)
- Roofing felt
- Pine cones
- Sand, Soil, Straw
- Cardboard



Any
natural objects
or materials
will do!

SITE

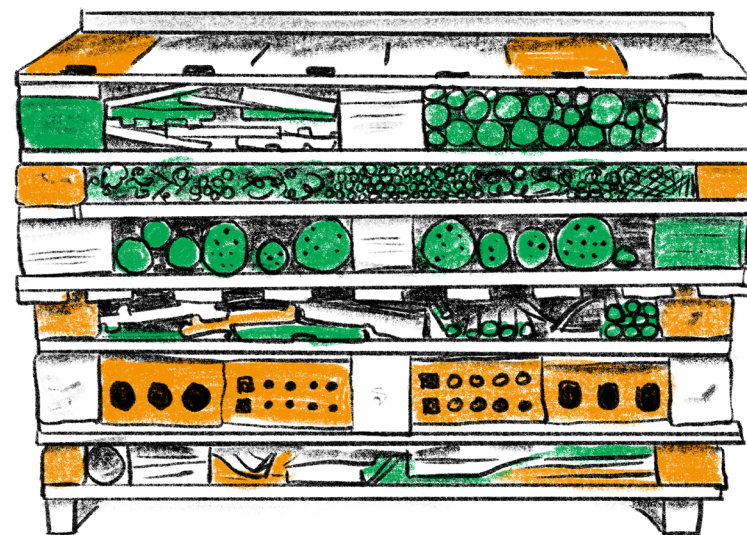
Find an area to build your bug hotel, it should be built on a solid flat floor. You can make it in a damp, cold area of your garden or the sunniest, each will attract a different type of bug and mammal.

BUILDING

If you are looking to attract small mammals and hedgehogs then we would suggest using bricks to create a stable structure base making it tall enough for them to crawl into.

Make sure its dark though so they can hibernate there through the winter. A pallet layered with roof tiles or wood can create a roof.

To attract other animals such as creepy crawlies, you can alternate stacking bricks and wood or just stack pallets on top of each other and again using roof tiles or wood you can create a lid for it to keep it dry.



NB If you have a fruit or vegetable patch then keep your bug house as far away as possible, you don't want all your crops eaten!

FILLING

For the hedgehog and mammal homes then fill the space with straw, pine cones, dried leaves; materials that are cosy and can keep the home damp but warm.

For the creepy crawly hotel we suggest filling all the holes with anything you have to hand. Toilet rolls filled with dried leaves or broken pots and moss or logs and sticks can all be pushed into the holes of the pallets and create lovely bedrooms for bugs and insects to thrive.

FINISH

After adding the roof you can stop there or you can do a little bit more for your lovely bug hotel. Below are some just some ideas:

You can plant wild flowers and such around it to attract bees and butterflies.

Name your hotel and create a sign for all to see; this bit is especially fun for the kids, get them painting the sign and having a naming ceremony.

Be creative, you don't have to follow the rules, bugs love damp spaces with gaps and holes to live and build around. You can use anything natural to fill the space up use your imagination and have fun.



-  @EtonCollegeMuseums
-  @EtonCollegeMuseums
-  @EtonCollMuseums
-  Collections@etoncollege.org.uk

How to Make a Wooden Wind Chime

An easy, fun and musical craft to create with your family!
Once complete, your wooded wind chime can be hung on a tree, fence, window or anything else you have in the garden. It can be painted or left its natural colour. Either way, the birds will love your new creation.

MATERIALS

Gather supplies:

- Twigs, sticks or branches
- Nails or screws
- Hammer or screwdriver
- String or fishing line.

Optional

- Paint

BUILDING

If you would like to create a colourful wind chime, start by painting your sticks. You can leave them their natural colour if you prefer.

Ask an adult to help you add the nails or screws to the tops of the sticks. You then need to tie a length of string or fishing line around each one (see image to the right)

Tie the other ends of the string to a horizontal stick or branch. Do this with all your sticks.

Finally, tie the string to either side of the horizontal stick or branch so that your wind chime can be hung up!



How to Make a Nature Boat

If you have a pond or lake near to where you live you can make a nature boat to float and bob in the water. You can even make it for a sink or bathtub. Making multiple boats, or getting a friend to create one too, will mean that you can race your boats against each other!

MATERIALS

Gather supplies, most of which are natural objects.

- Twigs, sticks or branches
- Reeds or string
- Leaves
- Flowers

Optional

- Paint

BUILDING

If you want to paint your sticks to make your boat more colourful, do so at the beginning and ensure they are dry before you start putting your boat together.

Bunch your collection of twigs, sticks and branches together and tie them with your reeds or string (see image to the right). You may need to snap them first to make sure they are of similar length. This is the base of your boat. Place it in the water to see which way up it floats.

Once you know which way up it floats, you can add your decorations. You could add a leaf flag or a flower steering wheel! Use your imagination to make your boat stand out.



- Instagram: @EtonCollegeMuseums
- Facebook: @EtonCollegeMuseums
- Twitter: @EtonCollMuseums
- Email: Collections@etoncollege.org.uk

Have a go at
solving these
puzzles!

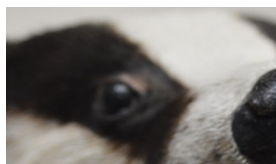
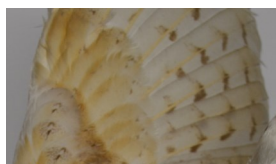
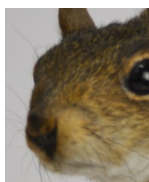
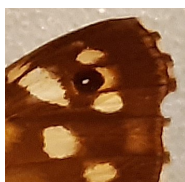
Woodland Activity



Woodland Word Fills

Fill in the missing letters.

Use the close-up picture clues to help you!



O _ _ L

B _ _ D _ _ E _ _

_ _ Q _ _ I _ _ R _ _ L

B _ _ T _ _ E _ _ L _ _

PUZZLE PAGE

BADGER

BAT

BIRD

BUG

DEER

FOX

HEDGEHOG

MOUSE

SQUIRREL

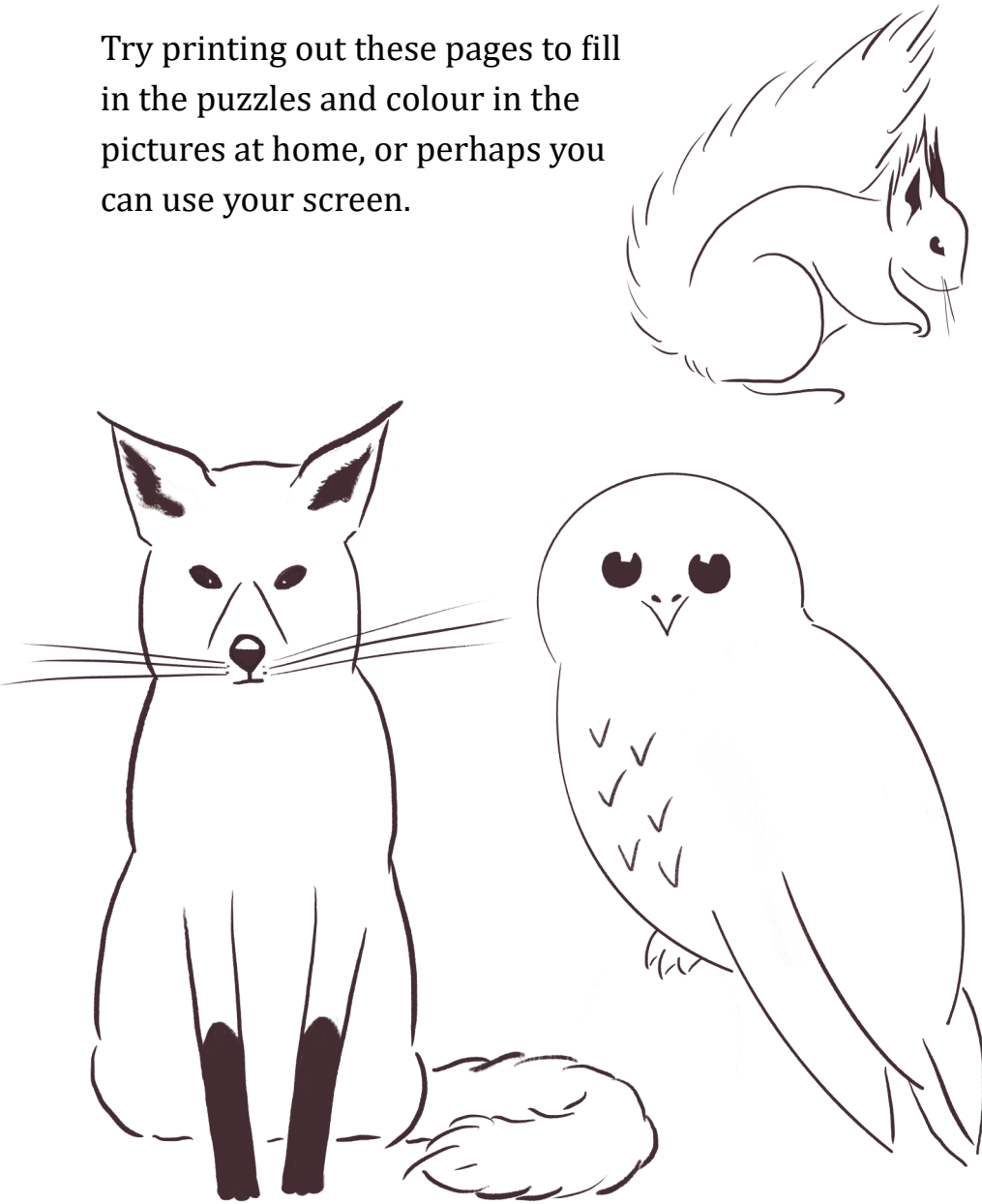
Word Search

F	C	E	H	R	I	D	U	S
B	A	D	G	E	R	J	S	Q
U	S	R	X	I	T	F	A	U
G	T	G	B	W	E	O	D	I
R	E	M	U	L	R	X	G	R
E	S	I	H	C	E	I	Q	R
O	U	K	O	G	E	U	R	E
G	O	H	E	G	D	E	H	L
L	M	E	R	D	B	A	T	M



Creatures to Colour in

Try printing out these pages to fill in the puzzles and colour in the pictures at home, or perhaps you can use your screen.



Create your own Woodland Creature!

Think about what sort of creature it will be.

What will it look like? What does it sound like? Does it live in trees or gardens? What does it eat? What is it called?

